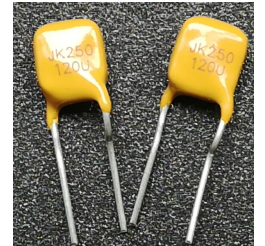
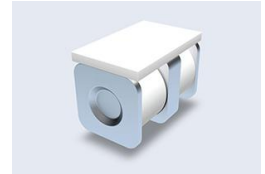
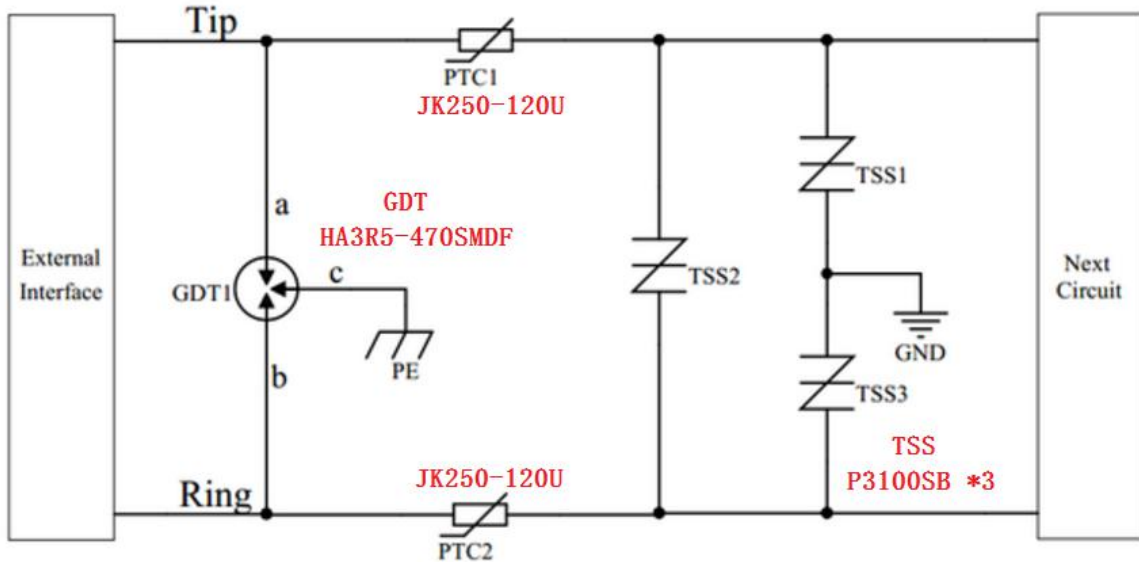


### ▼RJ11 Solution:

Surge level: 10/700 $\mu$ s CM/DM 6KV



### Specification.....

Part Number	DC Spark-over Voltage@100V/S	Insulation Resistance	Impulse discharge current(8/20 $\mu$ s)	AC discharge current (50Hz,1s,10times)	Capacitance (1MHz)	Size	UL file number
<b>GDT</b>	V	G $\Omega$	10 Times	A	PF	mm	✓
<b>HA3R5-470SMDF</b>	470V $\pm$ 20%	>1	5KA	5	$\leq$ 1	$\Phi$ 5*7.6	<b>E505240</b>

Part Number	V <sub>DRM</sub> @I <sub>DRM</sub> =5 $\mu$ A	V <sub>s</sub> @100V/ $\mu$ s	I <sub>h</sub>	I <sub>s</sub>	I <sub>r</sub>	V <sub>T</sub> @I <sub>T</sub> =2.2Amps	Capacitance @1MHz,2V bias	impulse withstand voltage	Package
<b>TSS * 3</b>	V <sub>min</sub>	V <sub>max</sub>	mA <sub>min</sub>	mA <sub>max</sub>	A <sub>max</sub>	V <sub>max</sub>	pF	10/700us	
<b>P3100SB</b>	<b>275</b>	<b>350</b>	150	800	2.2	4	45	4KV	SMB

Part Number	V <sub>max</sub>	I <sub>max</sub>	I <sub>h</sub>	R <sub>max</sub>	R <sub>min</sub>	P <sub>d</sub>
<b>PTC</b>	V	A	A	$\Omega$	$\Omega$	w
<b>JK250-120U</b>	250	10	0.12	11	6	0.8

We focus on development, production,distribution of GDT,TSS.MOV,TVS,ESD,PTC component.We have laboratories of EMC,aiming to provide total turnkey service of surge/ESD test and circuit PCB improvement.

