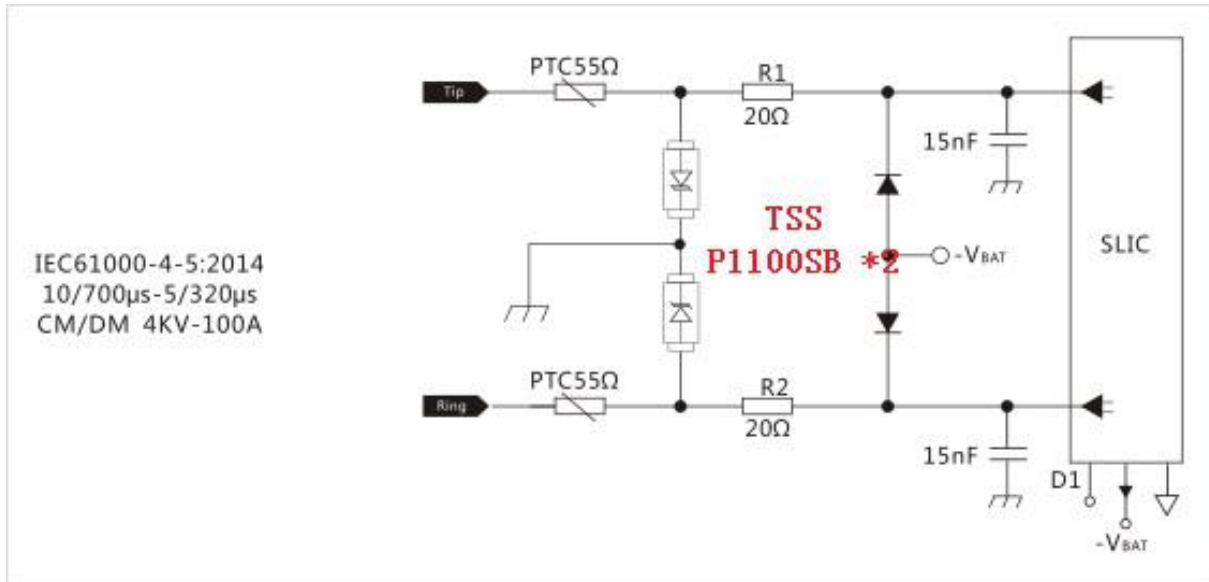


## ▼RJ11 SLIC Solution:

Surge level: 10/700µs CM/DM 4KV, 5/320µs - 100A



## Specification.....

Part Number	V <sub>DRM</sub> @I <sub>DRM</sub> =5 µ A	V <sub>S</sub> @100V/µs	I <sub>T</sub>	V <sub>T</sub> @I <sub>T</sub> =2.2Amps	Capacitance @1MHz,2V bias	impulse withstand voltage	Package
<b>TSS * 2</b>	V <sub>min</sub>	V <sub>max</sub>	A <sub>max</sub>	V <sub>max</sub>	pF	10/700us	
<b>P1100SB</b>	<b>90</b>	<b>130</b>	2.2	4	50	4KV	SMB

We focus on development, production,distribution of GDT,TSS.MOV,TVS,ESD,PTC component.We have laboratories of EMC,aiming to provide total turnkey service of surge/ESD test and circuit PCB improvement.

[sales@huaandz.com](mailto:sales@huaandz.com)