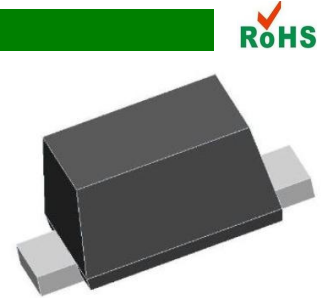


TVS Diode Array

APPLICATION

- ◆ Cell Phone Handsets and Accessories
- ◆ Microprocessor based equipment
- ◆ Personal Digital Assistants (PDA's)
- ◆ Notebooks, Desktops, and Servers
- ◆ Portable Instrumentation
- ◆ Peripherals
- ◆ Pagers



IEC COMPATIBILITY

- ◆ IEC61000-4-2 (ESD) ±15kV (air), ±8kV (contact)

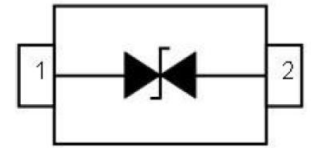
Package: SOD-523



Contact: ±8kV Air: ±15kV

FEATURES

- ◆ 100 Watts Peak Pulse Power per Line (tp=8/20µs)
- ◆ Protects one I/O line (bidirectional)
- ◆ Low clamping voltage
- ◆ Working voltages: 5V
- ◆ Low leakage current



PIN CONFIGURATION

MAXIMUM RATINGS AND CHARACTERISTICS Ratings at 25°C ambient temperature unless otherwise specified.

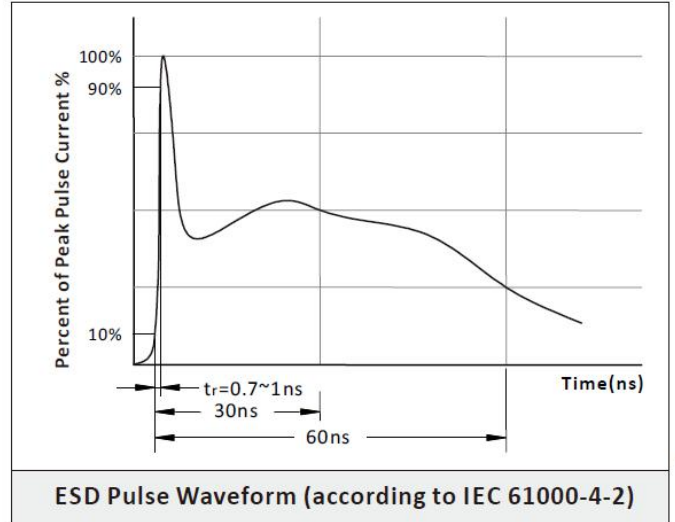
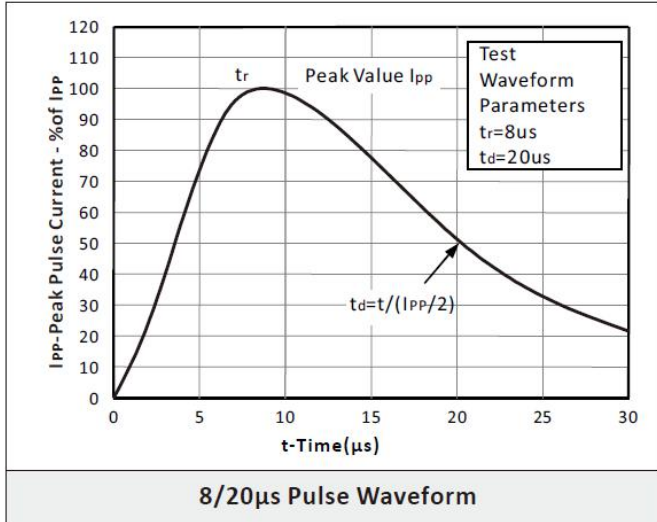
RATING	SYMBOL	VALUE	UNITS
Peak Pulse Power (tp=8/20µs waveform).	PPPM	100	Watts
Operating Temperature Range.	TJ	-55~+125	°C
Storage Temperature Range.	TSTG	-55~+150	°C

Stresses exceeding those listed in the Maximum Ratings table may damage the device. If any of these limits are exceeded, device functionality should not be assumed, damage may occur and reliability may be affected.

Part Number	VRWM	VBR	IR (max)	Co Max value	Vc @1A Max	Vc		Ppp 8/20us	Package
	V	V	(uA)	pF	V	V max	@A	W	
HAN0501D5	5.0	6.0	1.0	20	9.8	23	3	100	SOD-523

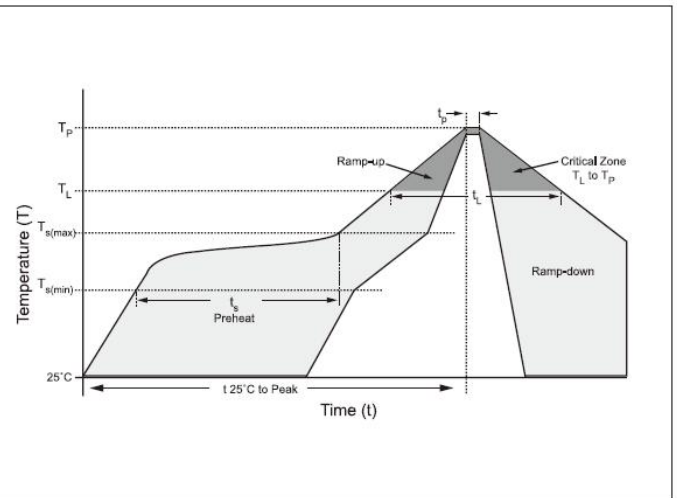
TVS Diode Array

CHARACTERISTIC CURVES



REFLOW PROFILE

Reflow Condition		Lead-free assembly
Pre Heat	Temperature Min (Ts(min))	150°C
	Temperature Max (Ts(max))	200°C
	Time (min to max) (ts)	60 – 180 secs
Average ramp up rate (Liquidus Temp (TL) to peak)		3°C/second max
Ts(max)to TL - Ramp-up Rate		3°C/second max
Reflow	Temperature (TL) (Liquidus)	217°C
	Time (min to max) (tl)	60 – 150 seconds
Peak Temperature (TP)		260°C
Time within 5°C of actual peak Temperature (tp)		20 – 40 seconds
Ramp-down Rate		6°C/second max
Time 25°C to peak Temperature (TP)		8 minutes Max.
Do not exceed		260°C



TVS Diode Array

PRODUCT DIMENSIONS

Symbol	Millimeters		Inches	
	Min.	Max.	Min.	Max.
A	0.50	0.70	0.020	0.028
b	0.25	0.35	0.010	0.014
C	0.07	0.20	0.0028	0.0079
D	0.70	0.90	0.028	0.035
E	1.10	1.30	0.043	0.051
E1	1.50	1.70	0.059	0.067
L	0.15	0.25	0.006	0.010

RECOMMENDED PAD LAYOUT DIMENSIONS

	<p>Notes: This recommended land pattern is for reference purposes only. Please consult your manufacturing group to ensure your PCB design guidelines are met.</p>
--	---

Ordering Information

Part Number	Qty per Reel	Reel Size	Package
HAN0501D5	3000pcs	7inch	SOD-523